	Oggetto:	Doc. n.	ST.TEC.032
	AZ3 Quick-Start Guide	Rev.	0.0
		Data	16/11/2018

## Indice


1. Basic instructions.....	2
2. Virtual oscilloscope.....	4
3. Diagnostic panel .....	5

INDICE DELLE REVISIONI						
Rev.	Par.	Descrizione della modifica	Data	R	V	A
0.0		First release	16/11/2018	bm	fb	fb

R = Redazione

V = Verifica


A = Approvazione

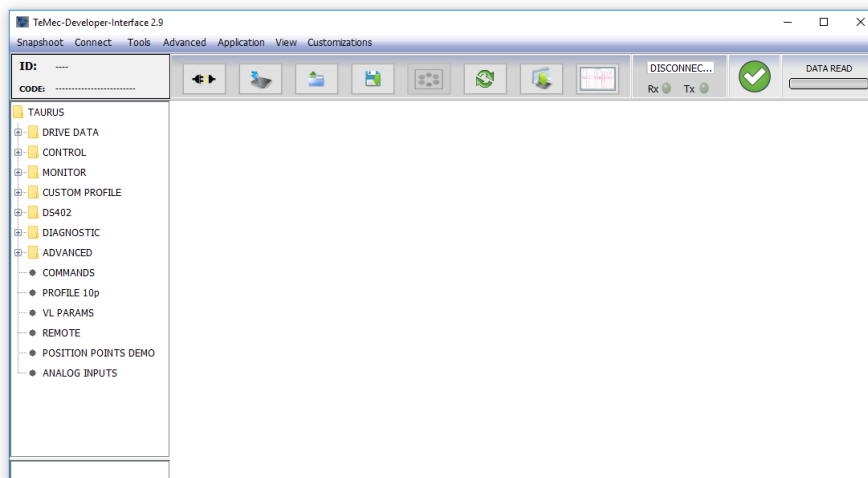
	Oggetto:	Doc. n.	ST.TEC.032
	<b>AZ3 Quick-Start Guide</b>	Rev.	0.0
		Data	16/11/2018

## 1. Basic instructions

AZ3 can be easily used following the instruction listed below.

1. Connect the motor to the drive (refer to ST.TEC.030.EN\_ManualAZ3).
2. Connect PC to the drive using AZ3 converter (refer to ST.TEC.030.EN\_ManualAZ3).
3. Switch on the drive (check that enable signal is connected to 24 V).
4. Launches the executable file TemecInterface.exe.


 TemecInterface.exe



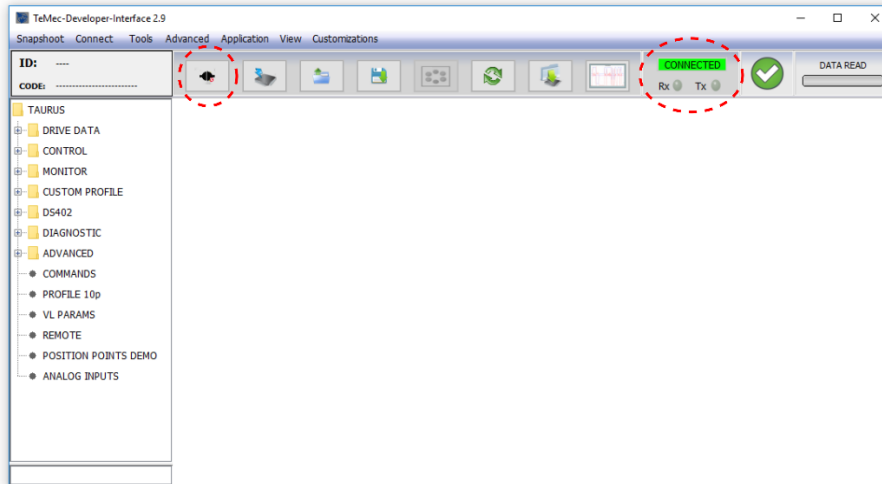
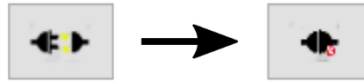
## 5. Select the proper connection:



- Click on Modbus to connect:
  - With AZ3 UART cable through PC conn
  - With 485 usb – adapter through modbus pins on RJ45
- Click on CANopen to connect:
  - With IXXAT usb to can adapter
  - With PEAK usb to CAN adapter
- Select address to connect from spinner in the left corner (default 1)

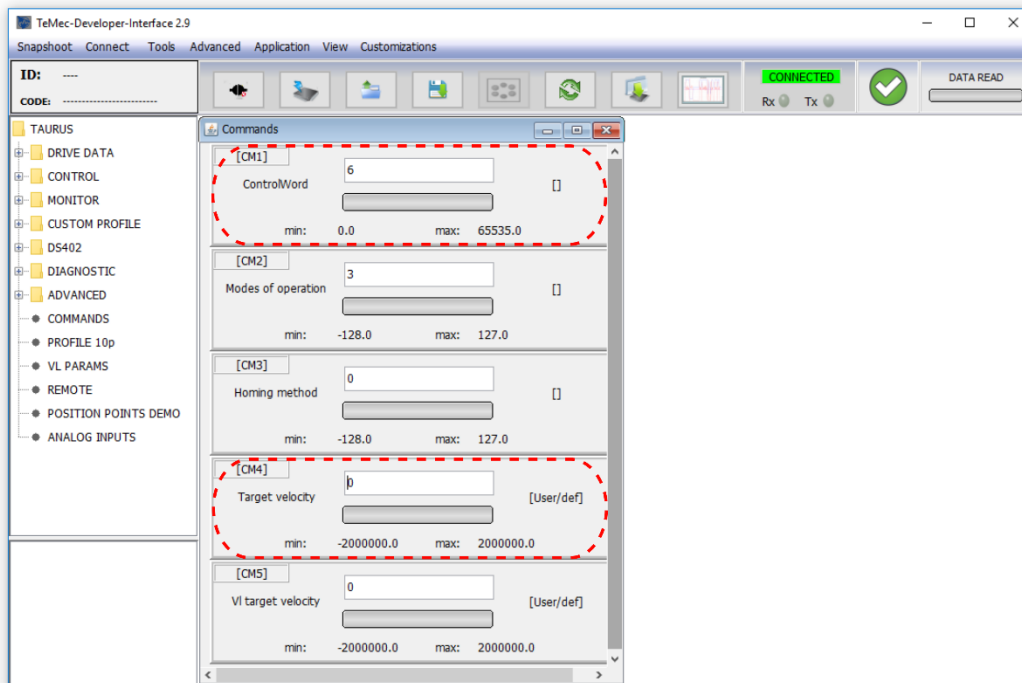
	Oggetto:	Doc. n.	ST.TEC.032
	<b>AZ3 Quick-Start Guide</b>	Rev.	0.0
		Data	16/11/2018

6. Connect the drive and the interface using connect button.




If connection failure occurs, close TeMec interface, turn-off the drive, check connections and then repeat operations from point three.

7. Open the commands panel



Set the value of the desired motor speed in *Target velocity* window.

Write 15 in the *ControlWord* window in order to move the DS402 state machine in the OPERATION ENABLED state and in order to activate power.

	Oggetto:	Doc. n.	ST.TEC.032
	AZ3 Quick-Start Guide	Rev.	0.0
		Data	16/11/2018

The value in *Target velocity* can be modified in order to test the motor at different speed.

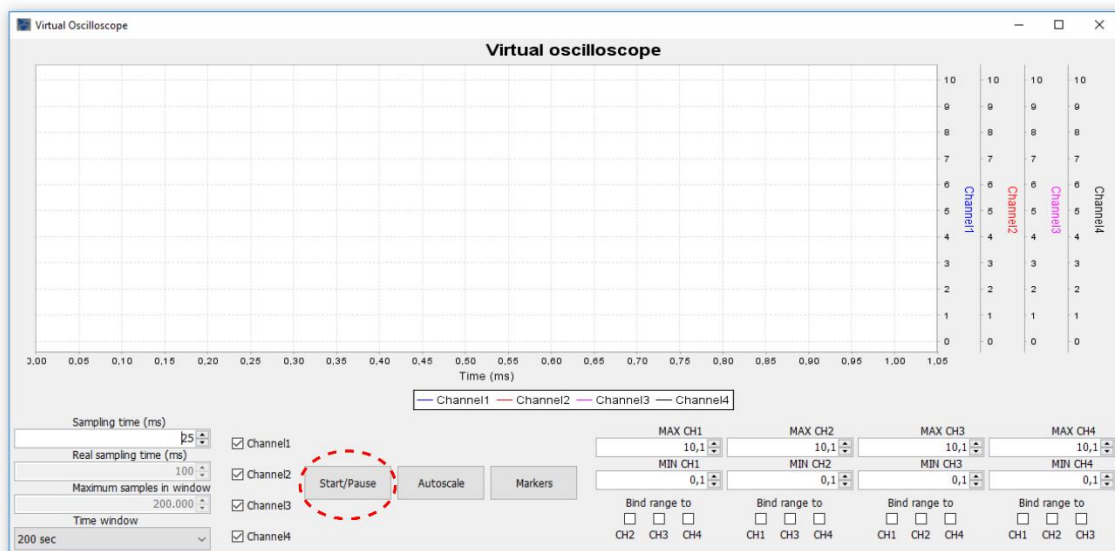
## 2. Virtual oscilloscope

Open the virtual oscilloscope in order to check actual velocity (channel 1, in rpm), target velocity (channel 2, in rpm) and torque current absorbed by the motor (channel 3,  $A_{RMS}$ ).


Push the following button in order to open virtual oscilloscope:

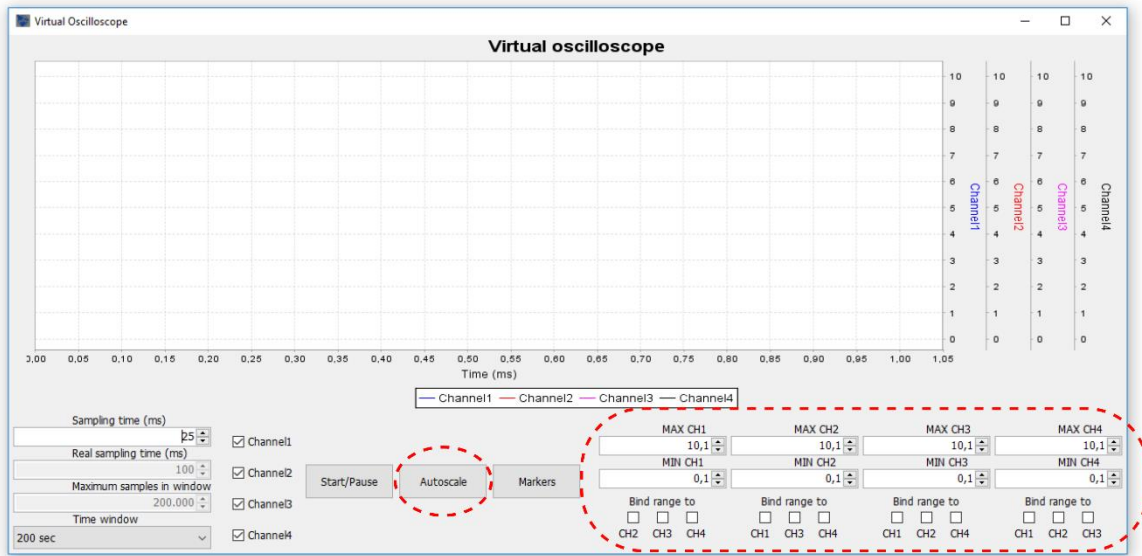


Push the start button to start with the data acquisition.



Adjust the vertical scale with Autoscale button and with the windows at the bottom right.

	Oggetto:	Doc. n.	ST.TEC.032
	AZ3 Quick-Start Guide	Rev.	0.0
		Data	16/11/2018



### 3. Diagnostic panel

It is possible to open the diagnostic panel pushing the following button:



Push the load button in order to obtain the drive diagnostic information.

